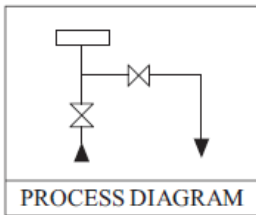


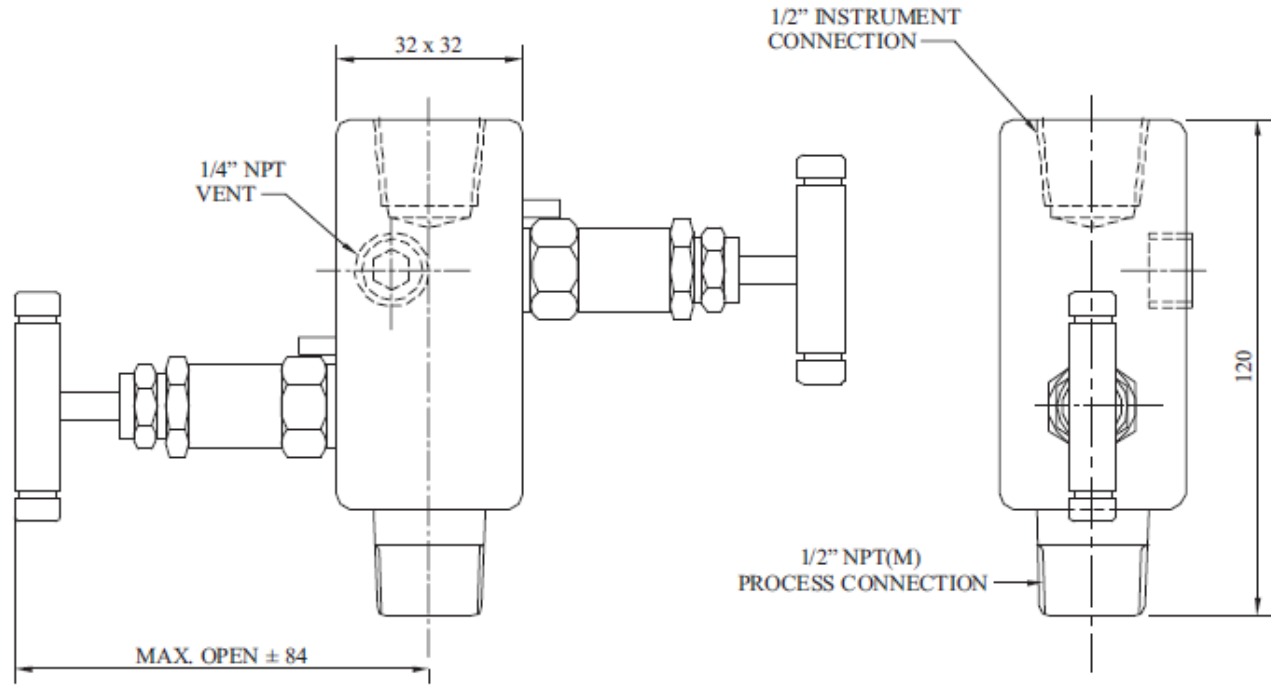
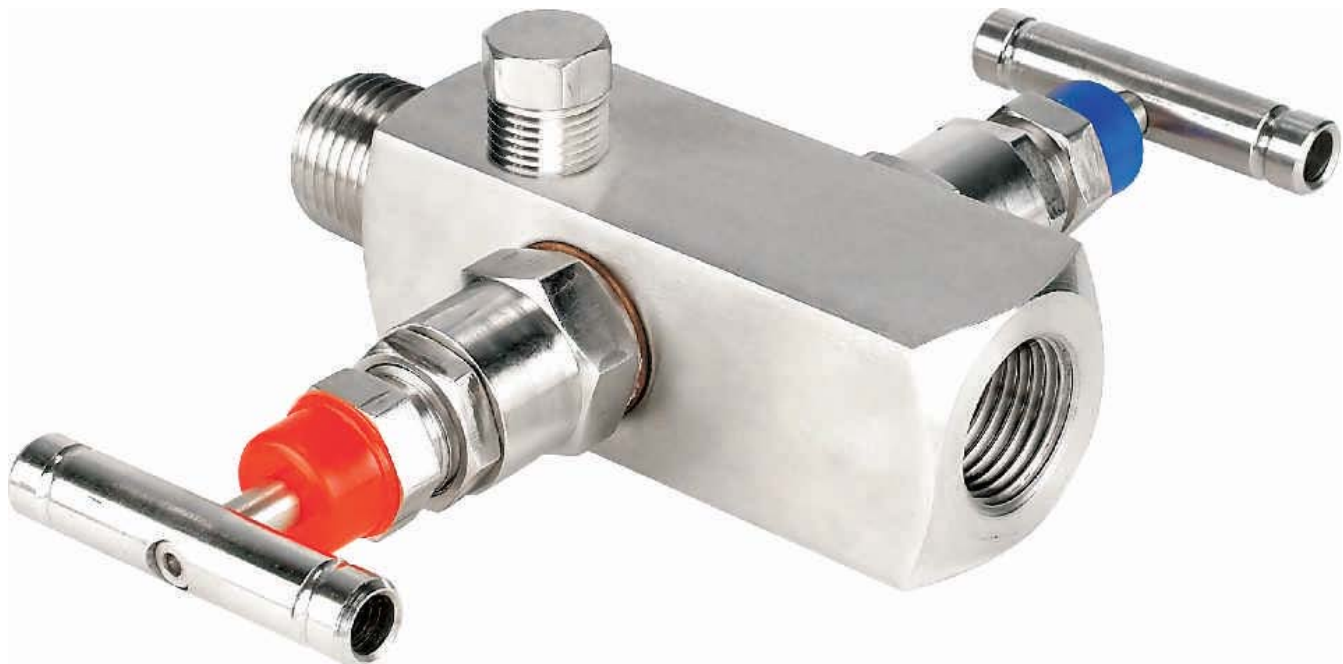
Manifold Valves

Manifold - R - 2 Way-01

Dwg No. IIMV/2R/01



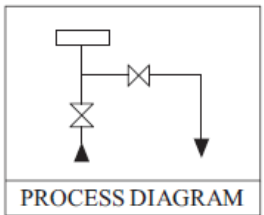
Orifice : 4 mm
 Approximate Weight : 1.0 kg
 Pressure : up to 6000 psi
 Temperature : up to 400°C
 All dimensions in Millimetre



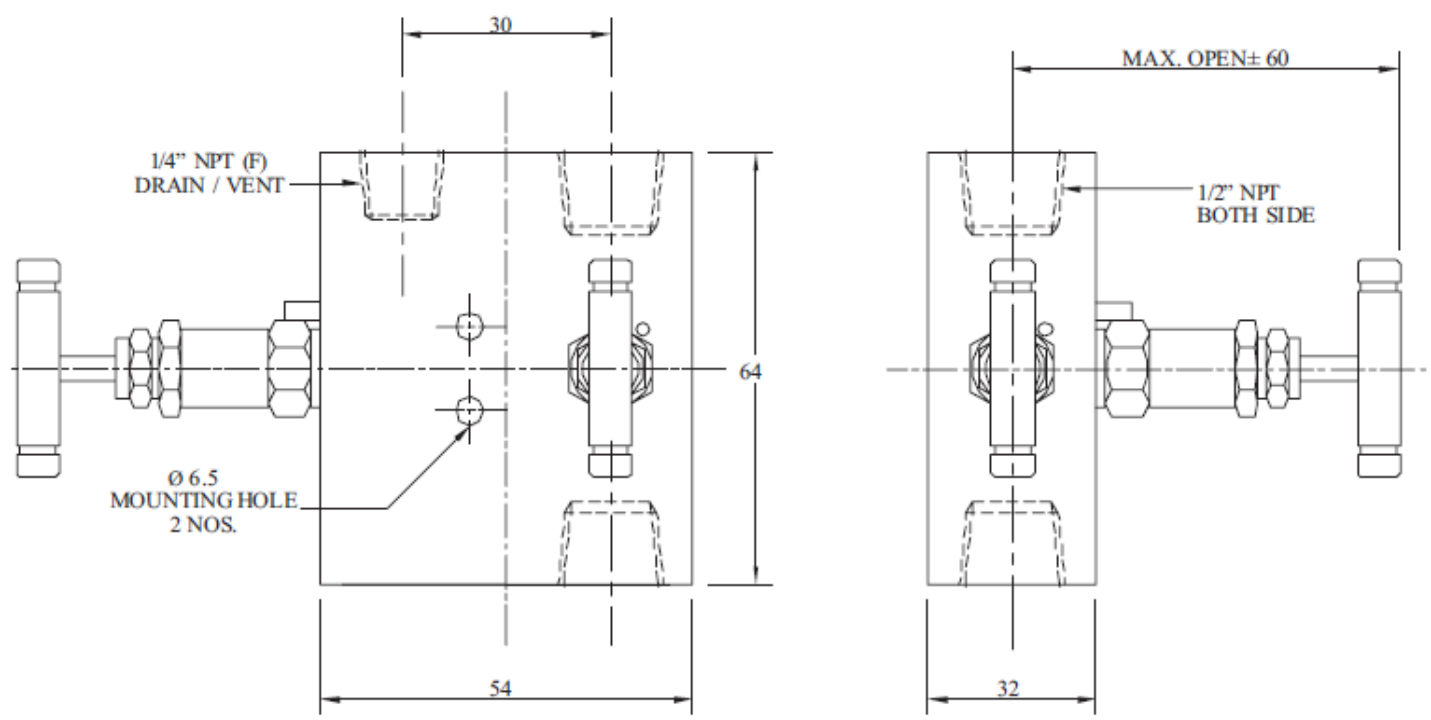
Manifold Valves

Manifold - R - 2 Way-02

Dwg No. IIMV/2R/02



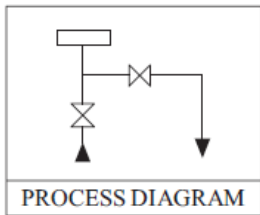
Orifice : 4 mm
 Approximate Weight : 1.0 kg
 Pressure : up to 6000 psi
 Temperature : up to 400°C
 All dimensions in Millimetre



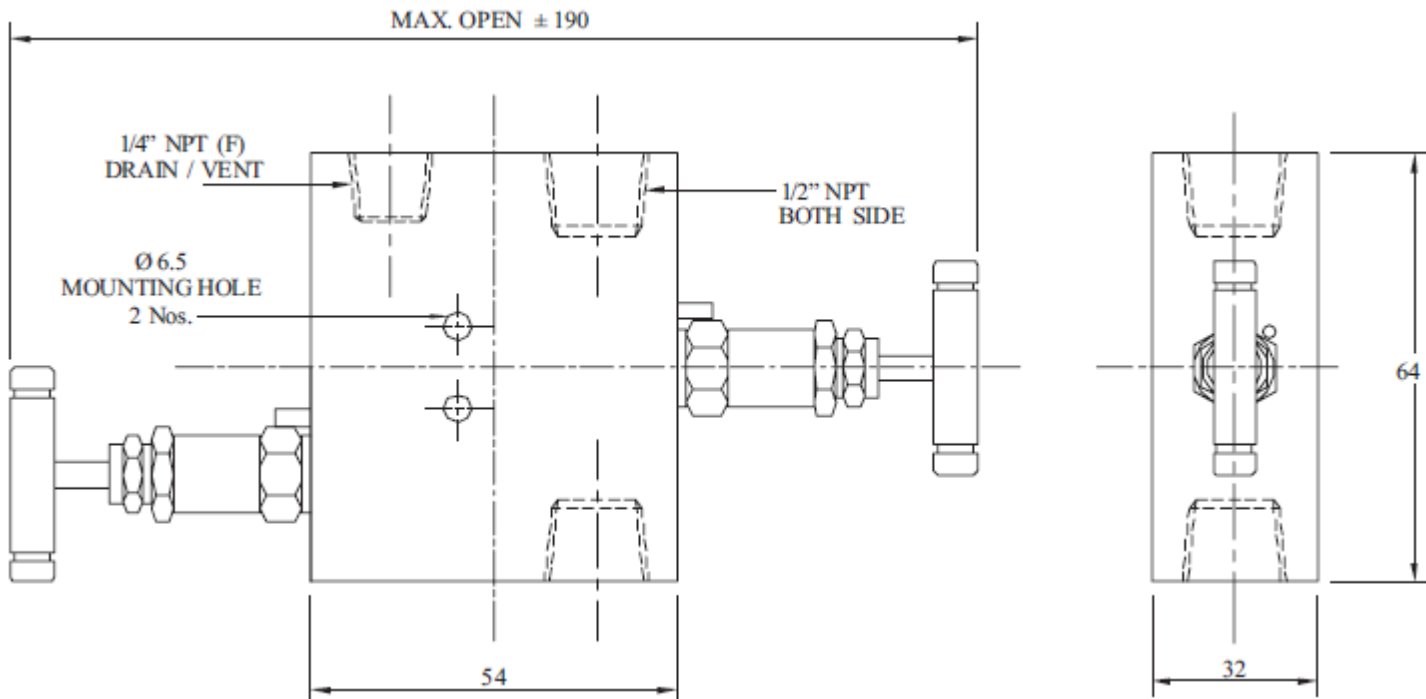
Manifold Valves

Manifold - R - 2 Way-03

Dwg No. IIMV/2R/03



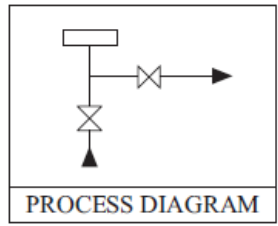
Orifice : 4 mm
Approximate Weight : 1.0 kg
Pressure : up to 6000 psi
Temperature : up to 400°C
All dimensions in Millimetre



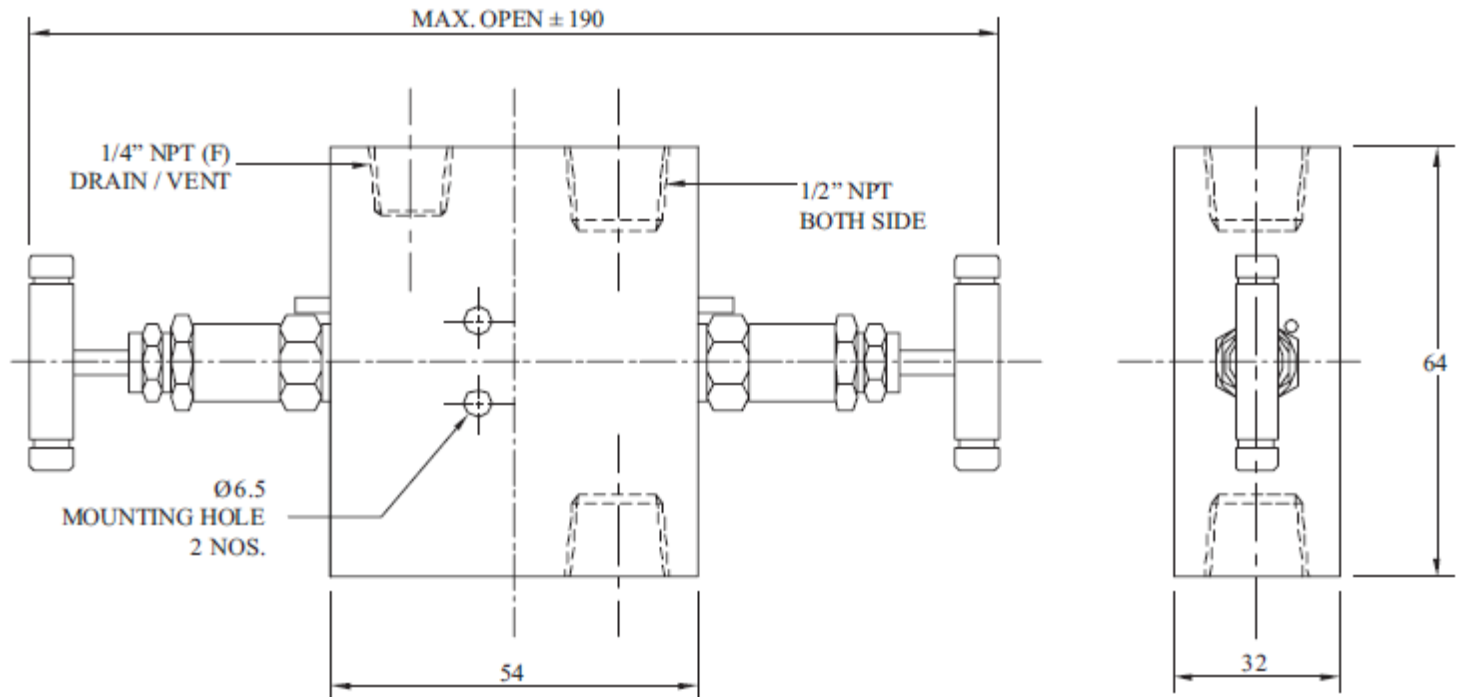
Manifold Valves

Manifold - R - 2 Way-04

Dwg No. IIMV/2R/04



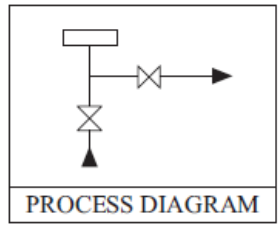
- Orifice : 4 mm
- Approximate Weight : 1.0 kg
- Pressure : up to 6000 psi
- Temperature : up to 400°C
- All dimensions in Millimetre



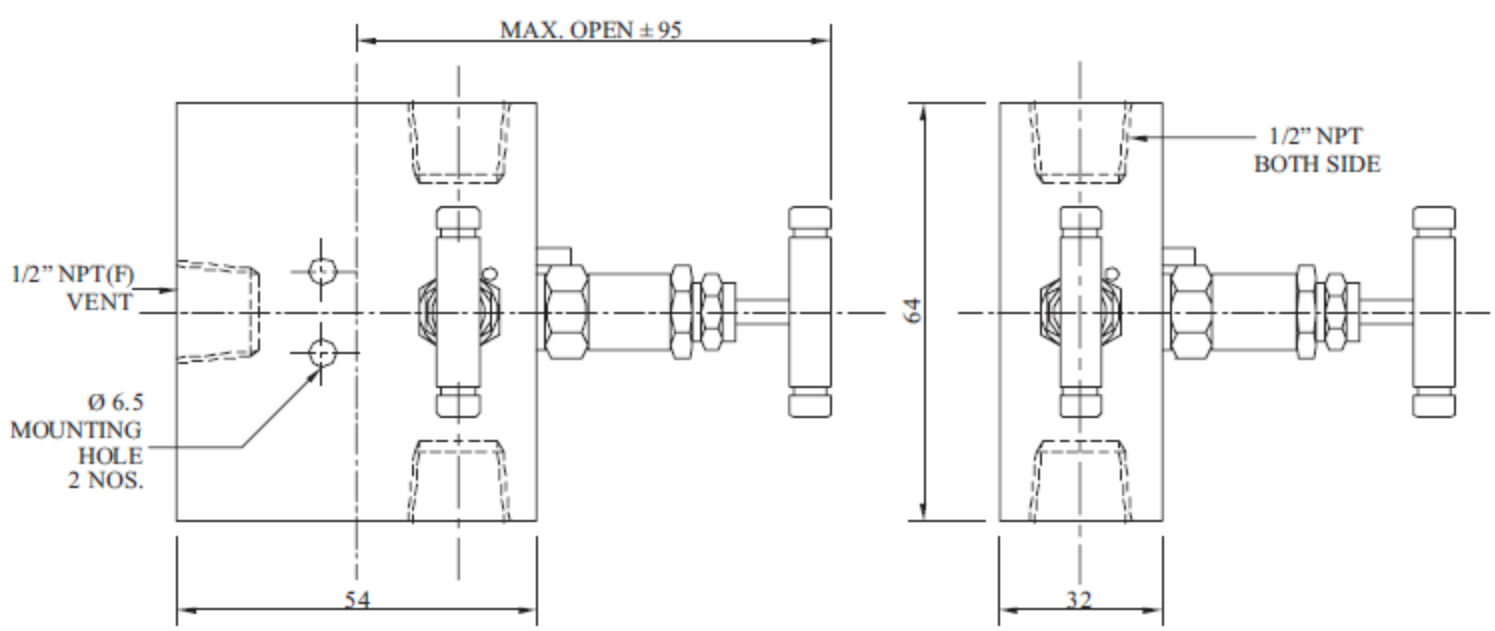
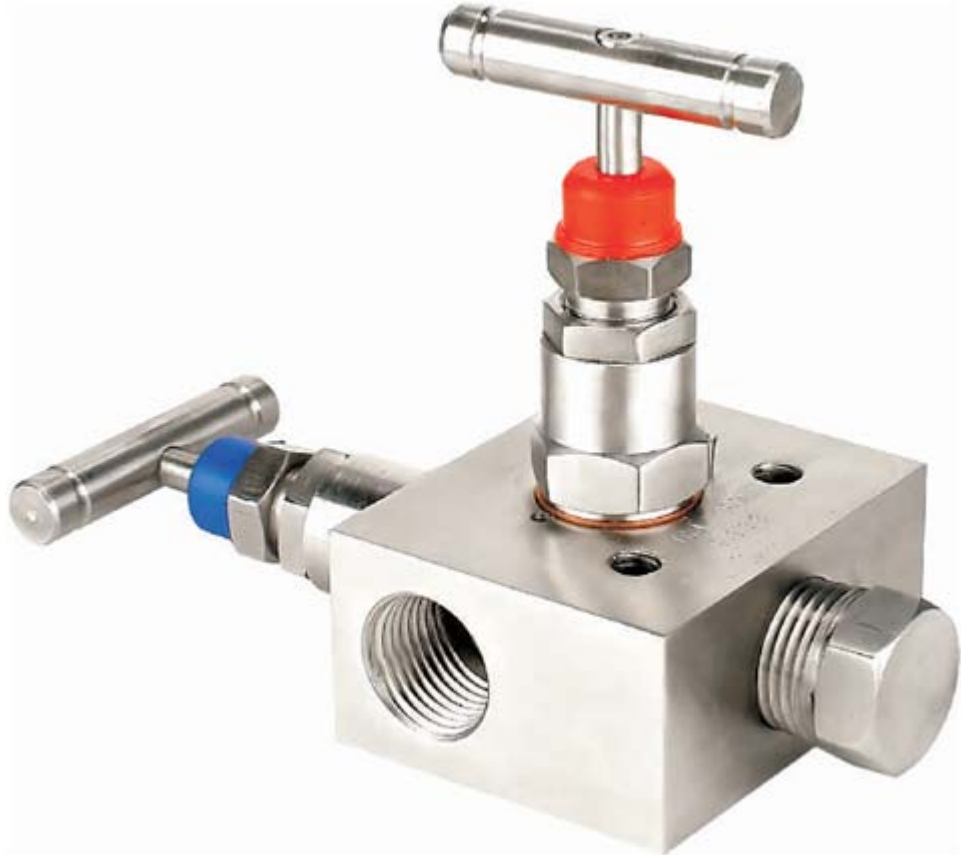
Manifold Valves

Manifold - R - 2 Way-05

Dwg No. IIMV/2R/05



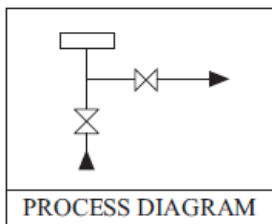
Orifice : 4 mm
 Approximate Weight : 1.0 kg
 Pressure : up to 6000 psi
 Temperature : up to 400°C
 All dimensions in Millimetre



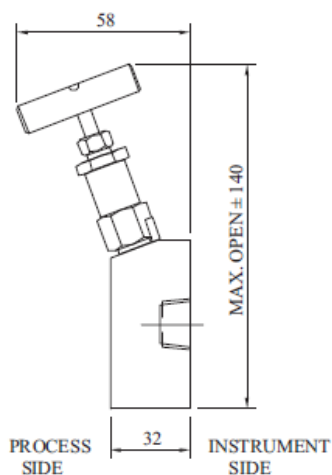
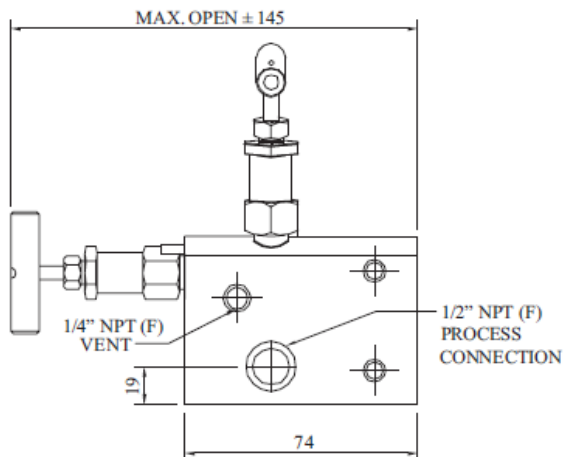
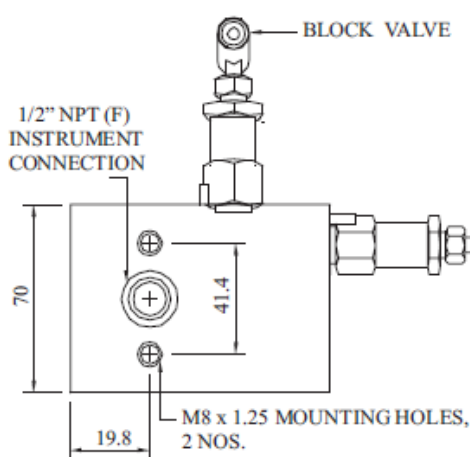
Manifold Valves

Manifold - R - 2 Way-06 (Direct Mounting)

Dwg No. IIMV/2R/06



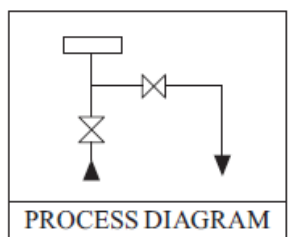
Orifice : 4 mm
 Approximate Weight : 1.2 kg
 Pressure : up to 6000 psi
 Temperature : up to 400°C
 All dimensions in Millimetre



Manifold Valves

Manifold - T - 2 Way (Direct Mounting)

Dwg No. IIMV/2T



Orifice : 4 mm
 Approximate Weight : 1.2 kg.
 Pressure : up to 6000 psi.
 Temperature: up to 400°C
 All dimension in Millimeter

ACCESSORY

