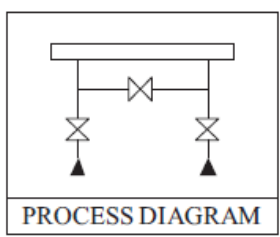


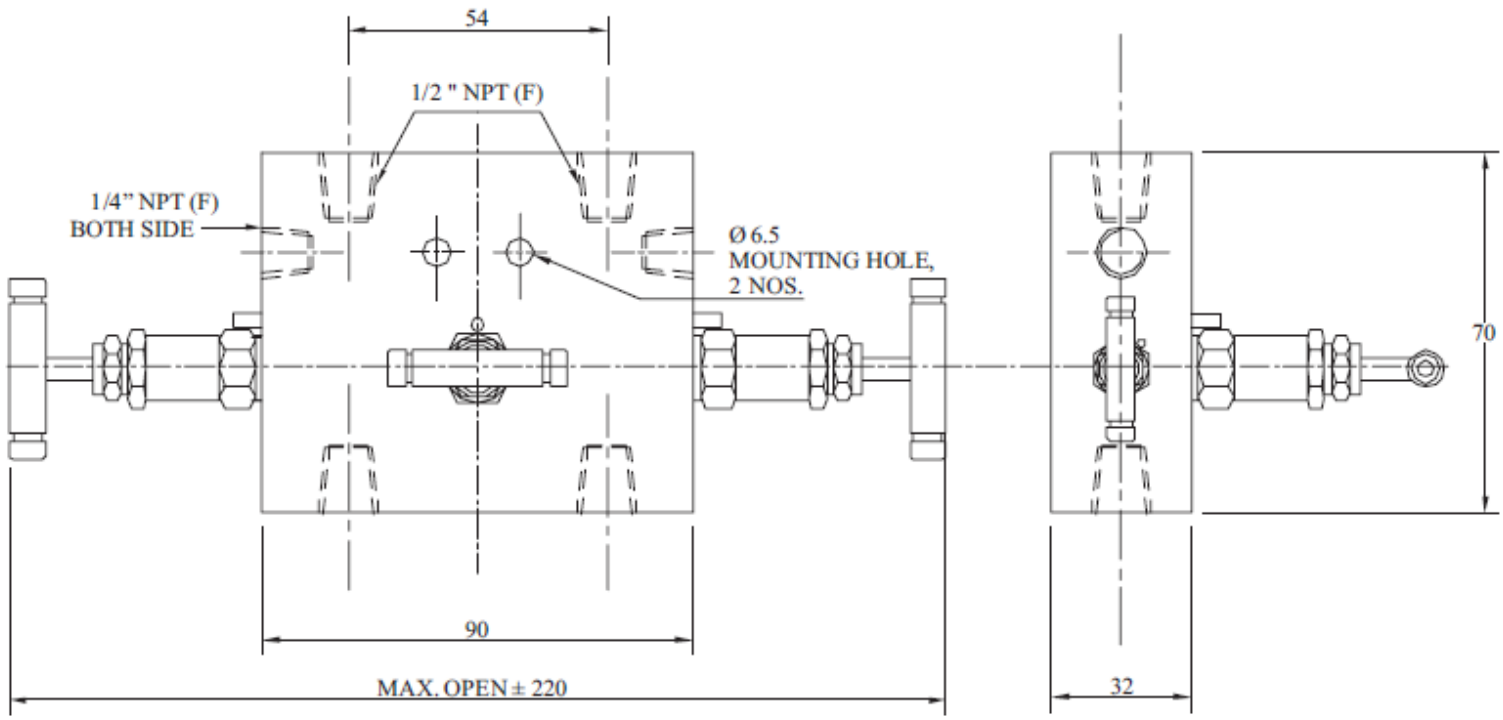
Manifold Valves

Manifold - R - 3 Way-01

Dwg No. IIMV/3R/01



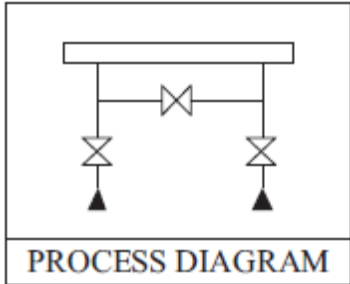
Orifice : 4 mm
 Approximate Weight : 1.5 kg.
 Pressure : up to 6000 psi.
 Temperature: up to 400°C
 All dimension in Millimeter



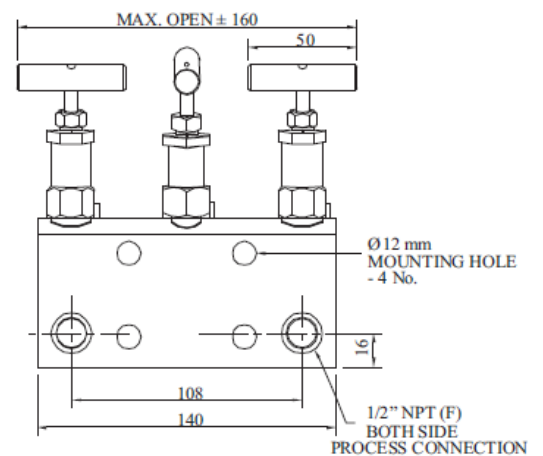
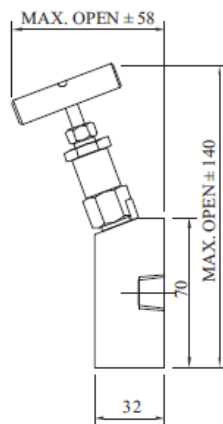
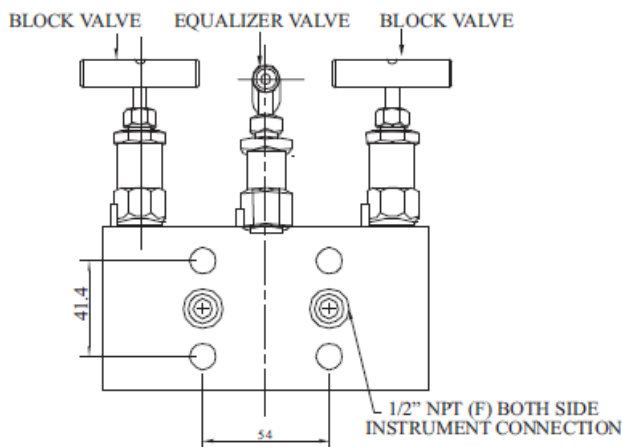
Manifold Valves

Manifold - R - 3 Way-02 (Direct Mounting)

Dwg No. IIMV/3R/02



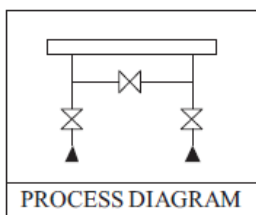
Orifice : 4 mm
 Approximate Weight : 1.5 kg.
 Pressure : up to 6000 psi.
 Temperature: up to 400°C
 All dimension in Millimeter



Manifold Valves

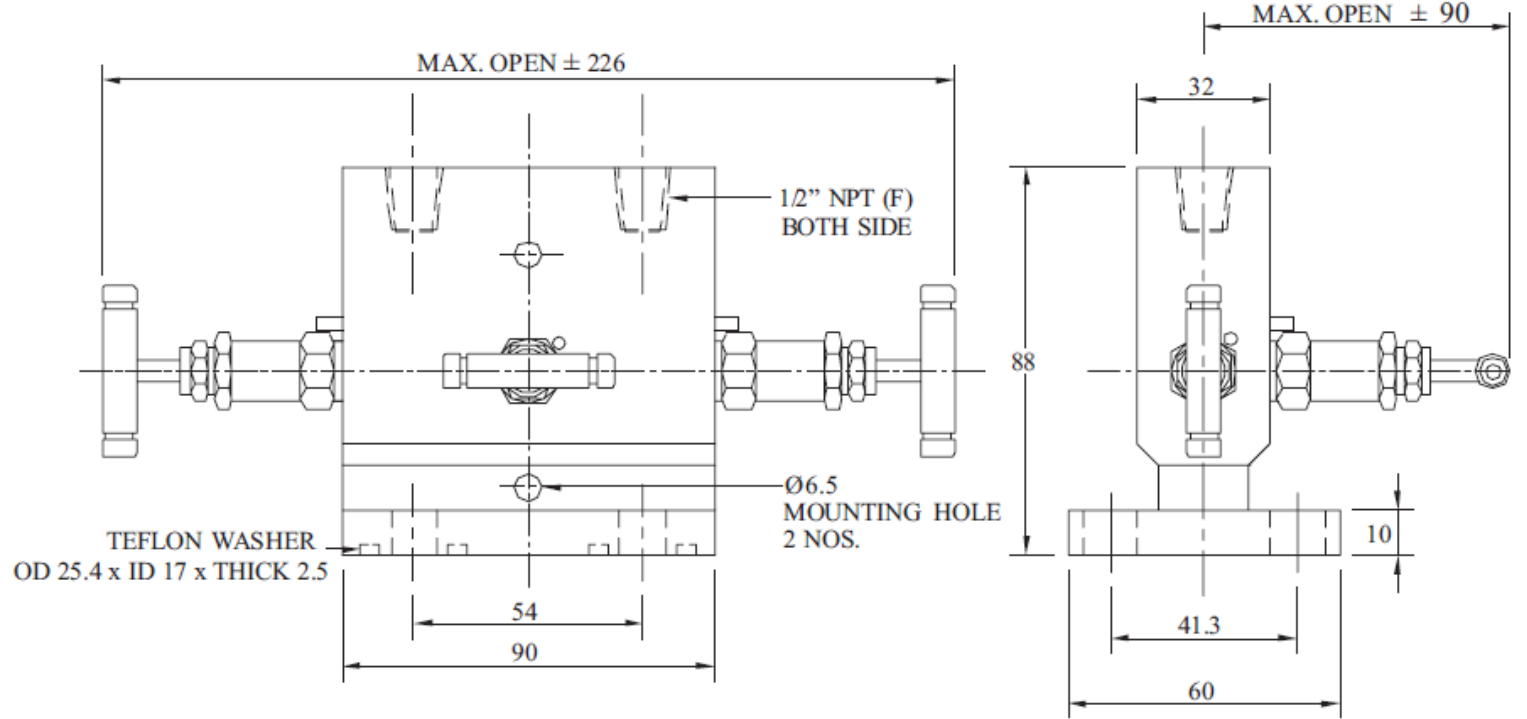
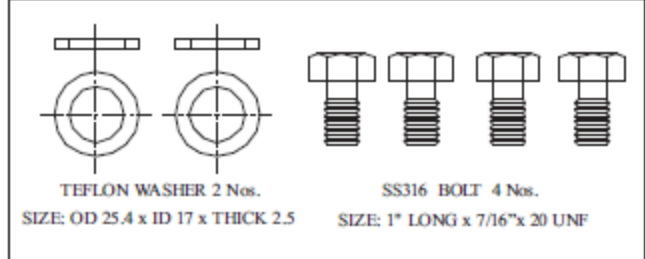
Manifold - T - 3 Way (Direct Mounting)

Dwg No. IIMV/3T



Orifice : 4 mm
 Approximate Weight : 1.5 kg.
 Pressure : up to 6000 psi.
 Temperature: up to 400°C
 All dimension in Millimeter

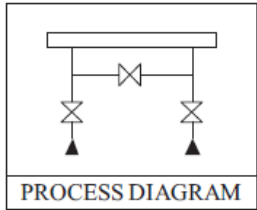
ACCESSORY



Manifold Valves

Manifold - H - 3 Way (Direct Mounting)

Dwg No. IIMV/3H



Orifice : 4 mm
 Approximate Weight : 2.6 kg.
 Pressure : up to 6000 psi.
 Temperature: up to 400°C
 All dimension in Millimeter



ACCESSORY

