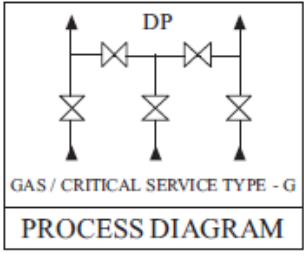
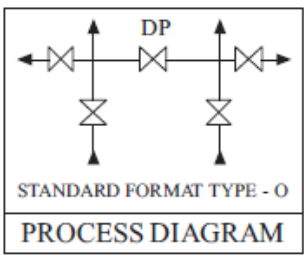


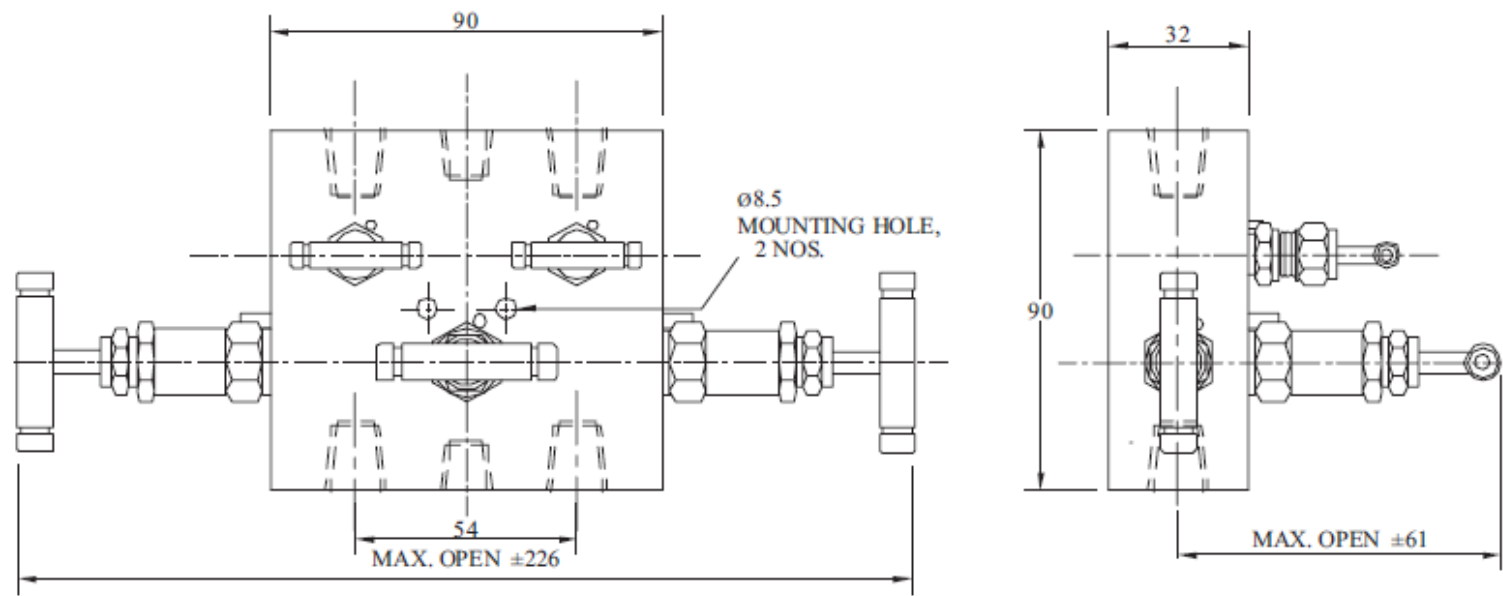
Manifold Valves

# Manifold - R - 5 Way-01

Dwg No. IIMV/5R/01



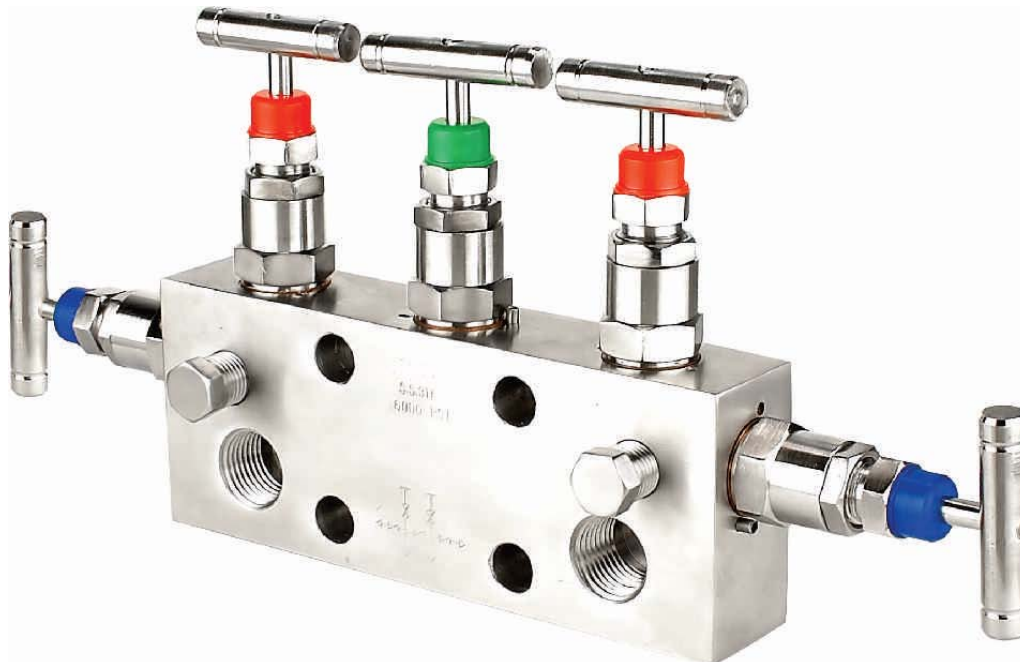
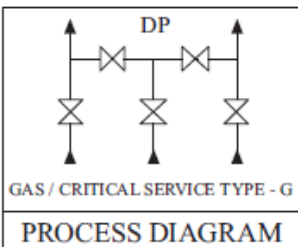
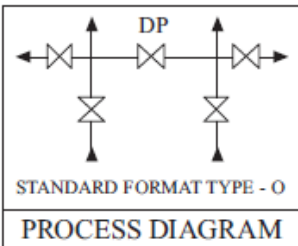
Orifice : 4 mm  
 Approximate Weight : 2.2 kg.  
 Pressure : up to 6000 psi.  
 Temperature: up to 400°C  
 All dimension in Millimeter



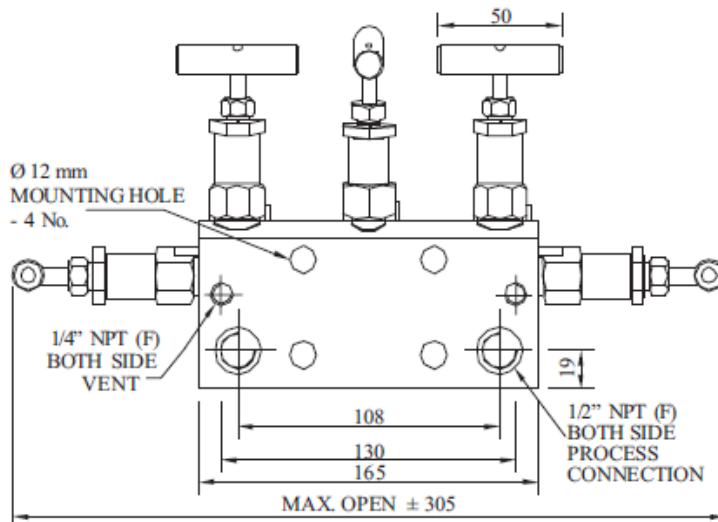
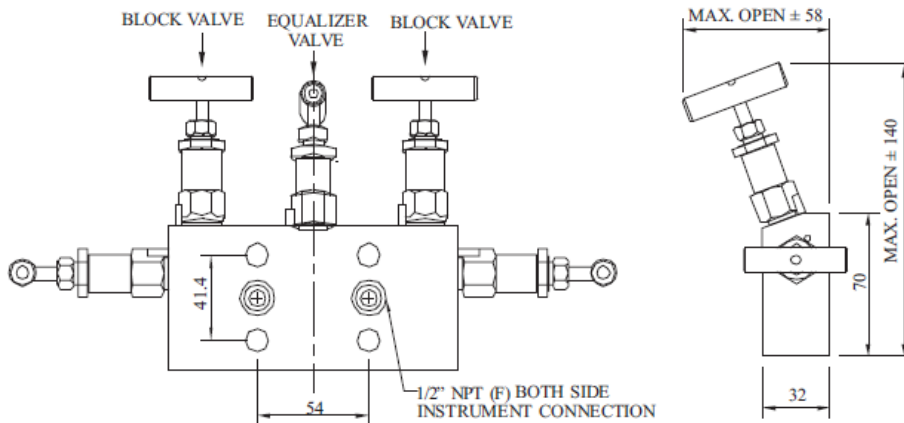
Manifold Valves

# Manifold - R - 5 Way-02 (Direct Mounting)

Dwg No. IIMV/5R/02



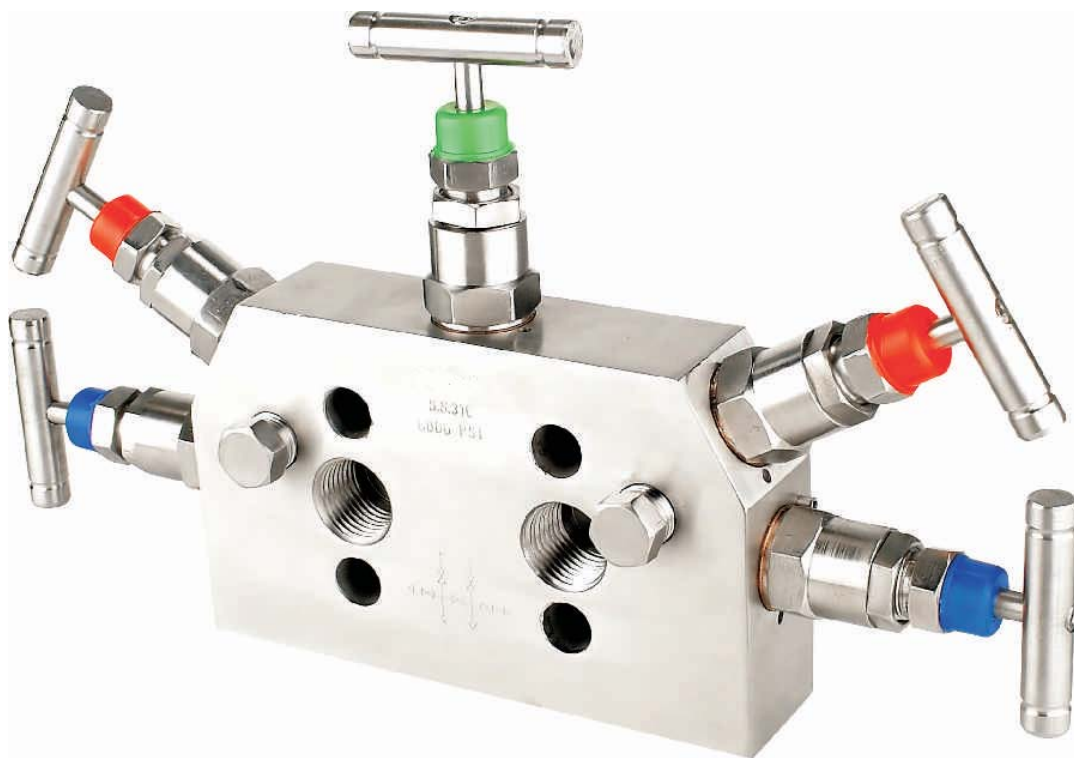
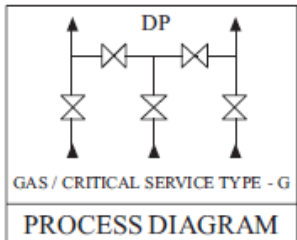
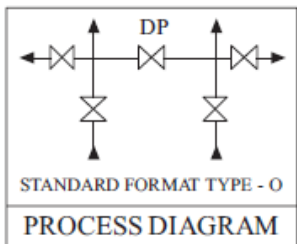
Orifice : 4 mm  
 Approximate Weight : 2.5 kg.  
 Pressure : up to 6000 psi.  
 Temperature: up to 400°C  
 All dimension in Millimeter



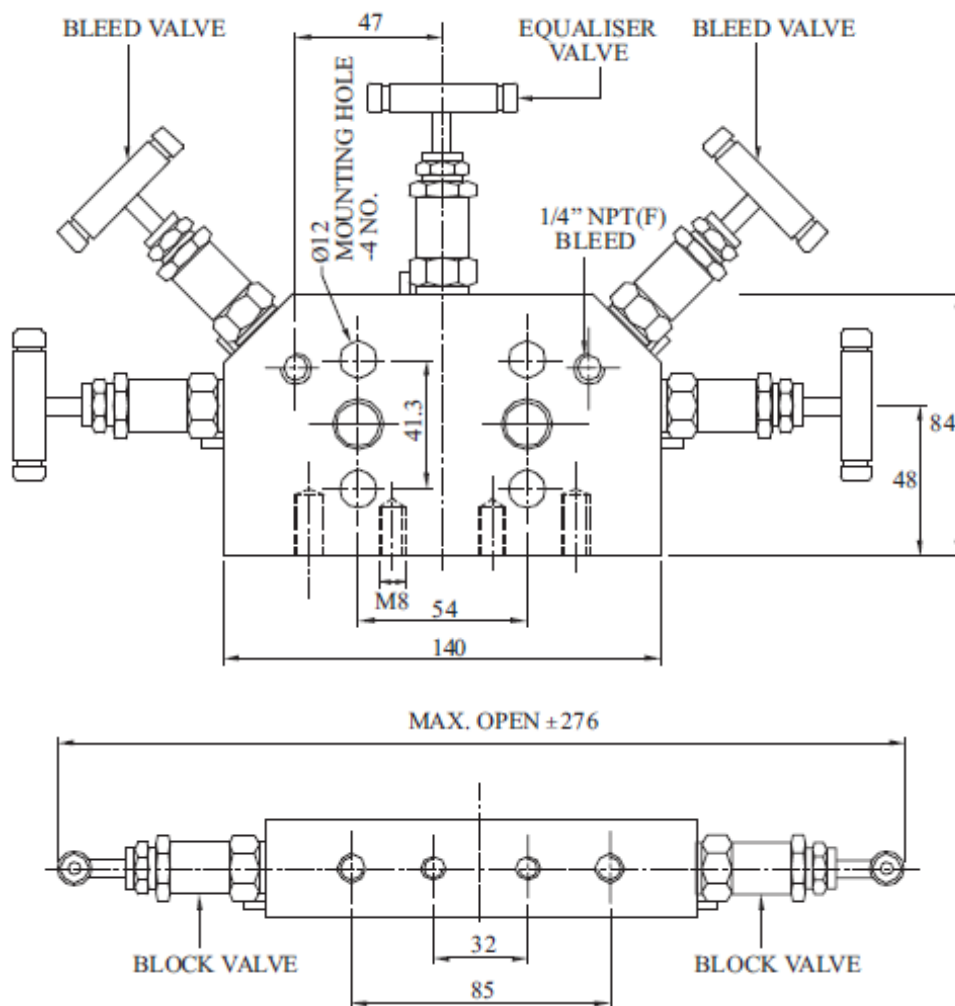
Manifold Valves

# Manifold - R - 5 Way-03 (Direct Mounting)

Dwg No. IIMV/5R/03



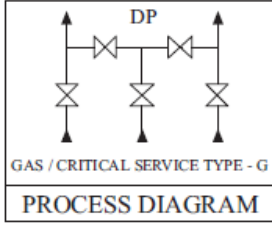
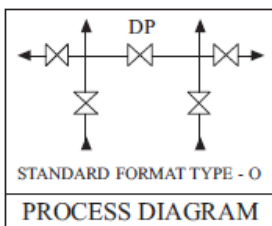
Orifice : 4 mm  
 Approximate Weight : 2.5 kg.  
 Pressure : up to 6000 psi.  
 Temperature: up to 400°C  
 All dimension in Millimeter



Manifold Valves

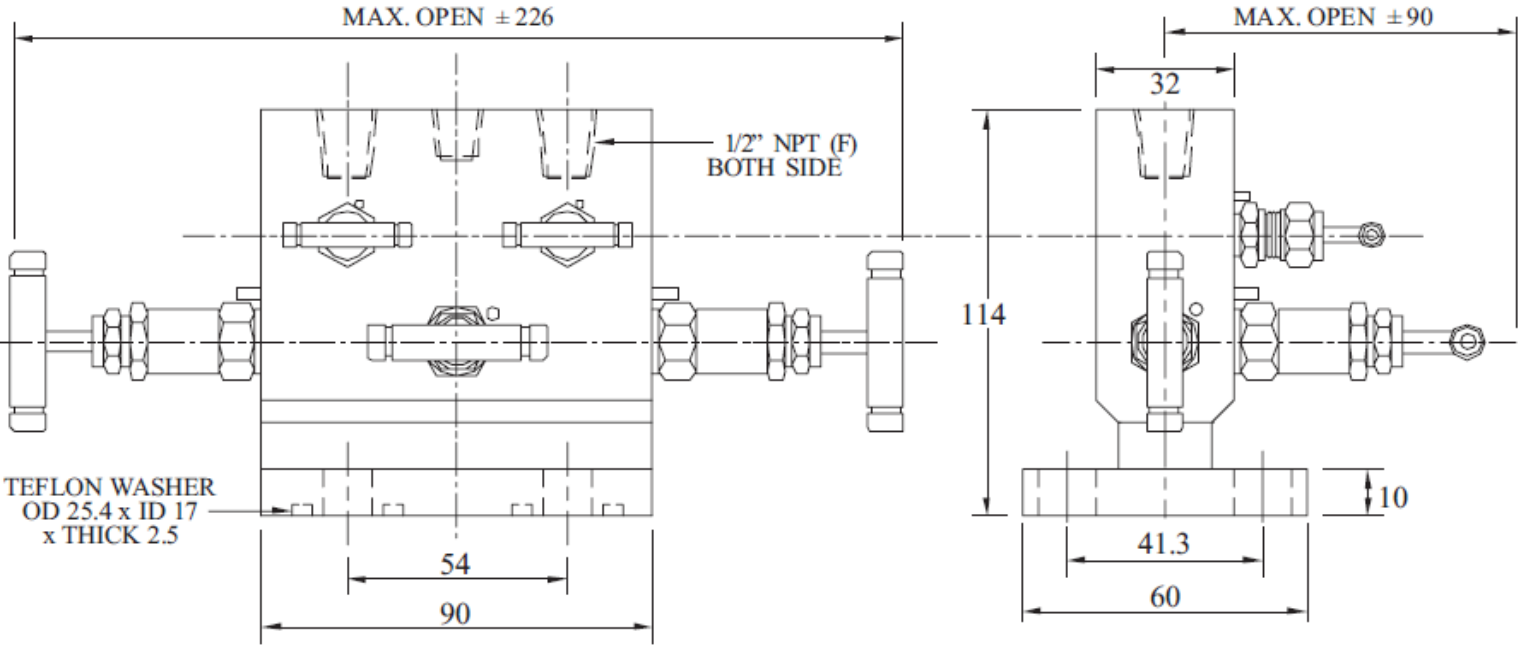
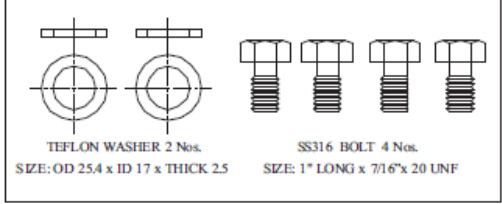
# Manifold - T - 5 Way (Direct Mounting)

Dwg No. IIMV/5T



Orifice : 4 mm  
 Approximate Weight : 2.5 kg.  
 Pressure : up to 6000 psi.  
 Temperature: up to 400°C  
 All dimension in Millimeter

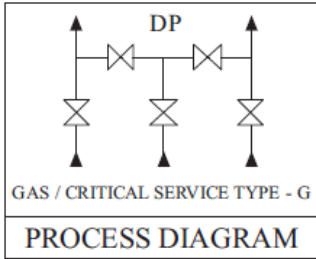
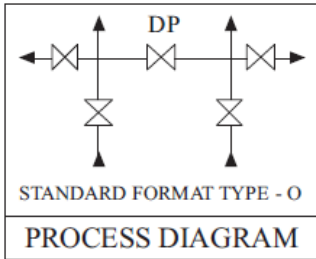
ACCESSORY



Manifold Valves

# Manifold - H - 5 Way (Direct Mounting)

Dwg No. IIMV/5H



Orifice : 4 mm  
 Approximate Weight : 3.2 kg.  
 Pressure : up to 6000 psi.  
 Temperature: up to 400°C  
 All dimension in Millimeter

ACCESSORY

