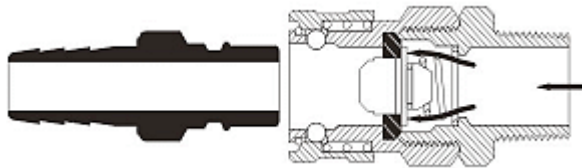


## Quick Release Couplings

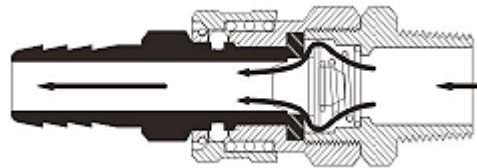
# Single Check Valve Quick Release Coupling

## When Plug & Socket are Disconnected



*The socket valve provides an instant seal, automatically shutting off fluid flow to prevent leakage.*

## When Plug & Socket are Connected



*The plug and socket engage securely, fully opening valve automatically to assure maximum fluid flow.*

Single Check Valve Quick Release Coupling is one of the most popular type of coupler which is used to connect air piping in factories and to connect air tools with hoses etc. Both socket and plug have hose use and screw use advantages. There is also a variety of other types. One check valve is built into the coupling and only plugs do not have check valve. This can be used where one sided flow system is needed and the flow has to be sealed on disconnection.

Single shut off coupling is the most ideal solution for connection disconnection of pneumatic lines. Fast, Positive leak - proof connection is obtained without use

of any mechanical is obtained without use of any mechanical tools. Available from 1/8" To 1 1/2" Size with various choice of maximum performance end connections, precision Engineered to give better service life and maximum performance.



Coupling is performed by simply pressing the plug into socket. The sleeve snaps forward and connection is made. Pushing the sleeve back, disconnects the coupling. And Pressurized air is vented to atmosphere through unvalued plug.

### Features :

- For pneumatic tool lines.
- One-way automatic shut-off valve in the socket.
- Ideal for such applications as factory air supply.
- Pneumatic tool connections, etc.
- Many types for a wide variety of applications.

### Applications:

For fast, positive, leak proof connections. Pneumatic tools, air piping, air pressure equipment, water piping

### Material:

AISI 304, 316, 304L , 316L, Brass, Carbon Steel, MS.

### Dimensions:

As per ANSI B16.11, 16.9, B2.1 NPT, etc. End Connections like Screwed ends, Hose Shank, Flanged, Weld-able are available.

### Sizes:

1/8" To 3".

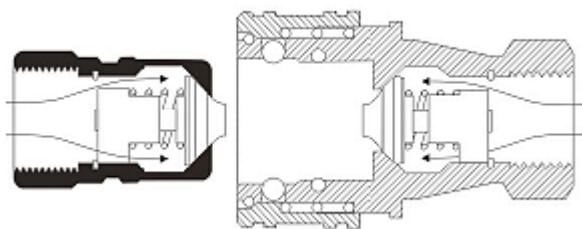
### Handling Precautions:

1. Always insure the direction of fluid flow is from the socket side (valve) to the plug side.
2. When used with jet chisel or other vibrating tools, connect a rubber hose about 30 cm long between the tool and the coupler

## Quick Release Couplings

# Double Check Valve Quick Release Coupling

## When Plug and Socket are Disconnected



*The valve of the socket and plug is pushed against the valve seat and closed automatically. There is no leakage of the fluid.*

This series of Quick Couplers have fast acting puppet valves in both coupler and plug to effectively prevent fluid loss during connection and disconnection.

Available in sizes from 1/8" to 3" in various choice of material and seal to meet the requirements of specific fluids and application Double Check Valve QRC are also available with dust cap and dust plug to prevent any contaminants getting in the system . This series has wide applications in hydraulic lines, vacuum systems, steam, gas and liquid installations.

DOUBLE SHUT OFF QRC series is general purpose double shut off quick coupler capable of containing a wide variety of fluids. Puppet style having with captive puppet seal provides a Guaranteed leak free seal. Available in body size from 1/8 " to 3" with BSP , NPT thread standard.

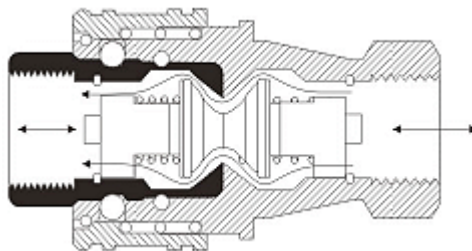
### Features:

- Both the plug and socket have an inbuilt valve, so there is no leakage of gas, oil, etc. from either the socket or plug ends when disconnected.
- They are manufactured by an especially high precision machining process, air tightness is a high 10<sup>-4</sup> mmHg / sec.
- The attached hoses does not twist.
- Designed for use in a wide range of application

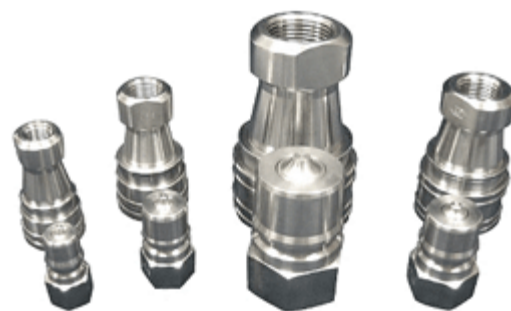
### Applications:

1. Primarily used for transfer of Hydraulic fluid.
2. It can also be used with water, Sea water, Chemicals, Steam.
3. In Stationery and mobile industrial applications.

## When Plug and Socket are Connected



*The valves of the socket and plug are pushed against each other, the interior of the coupling is opened, and the outside of the plug and there is no leakage to the outside.*



### Material:

AISI 304, 316, 304L , 316L, Brass, Carbon Steel, MS.

### Dimensions:

As per ANSI B16.11, 16.9 , B2.1 NPT , etc. End Connections like Screwed ends, Hose Shank, Flanged, Weld-able are available.

### Sizes:

1/8" To 3".

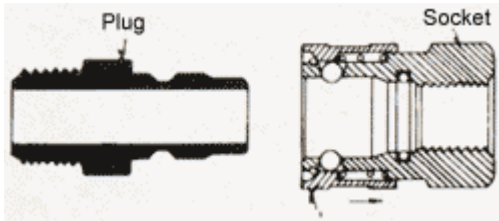
### Precaution:

- Select packing material in accordance with the type and temperature of fluid.
- Dust, foreign matter and flaws may cause leakage.

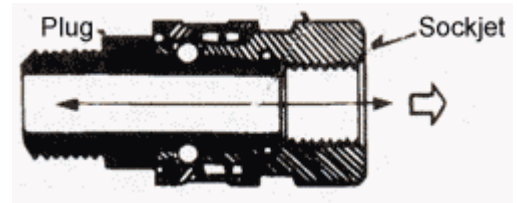
## Quick Release Couplings

# Straight Through Quick Release Coupling

## When Plug and Socket are Disconnected



## When Plug and Socket are Connected



Straight Through QRC is a double path open type coupler which does not have a valve mechanism at either the socket nor the plug. It is used in piping systems in which blocking of the fluid when disconnected is unnecessary and closure of lines is achieved by back up valves. This permits full flow capability due to their smooth and accurately finished bores.

### Feature

Since the pressure loss is small, it is ideal for High viscosity fluid. Hose end, screw end (male screw, female screw) and a variety of other types are also available.

### Material:

AISI 304, 316, 304L , 316L, Brass, Carbon Steel, MS.

### Dimensions:

As per ANSI B16.11, 16.9 , B2.1  
NPT , etc. End Connections like Screwed ends, Hose  
Shank, Flanged, Weld-able are available.

### Sizes:

1/8" To 3".

